

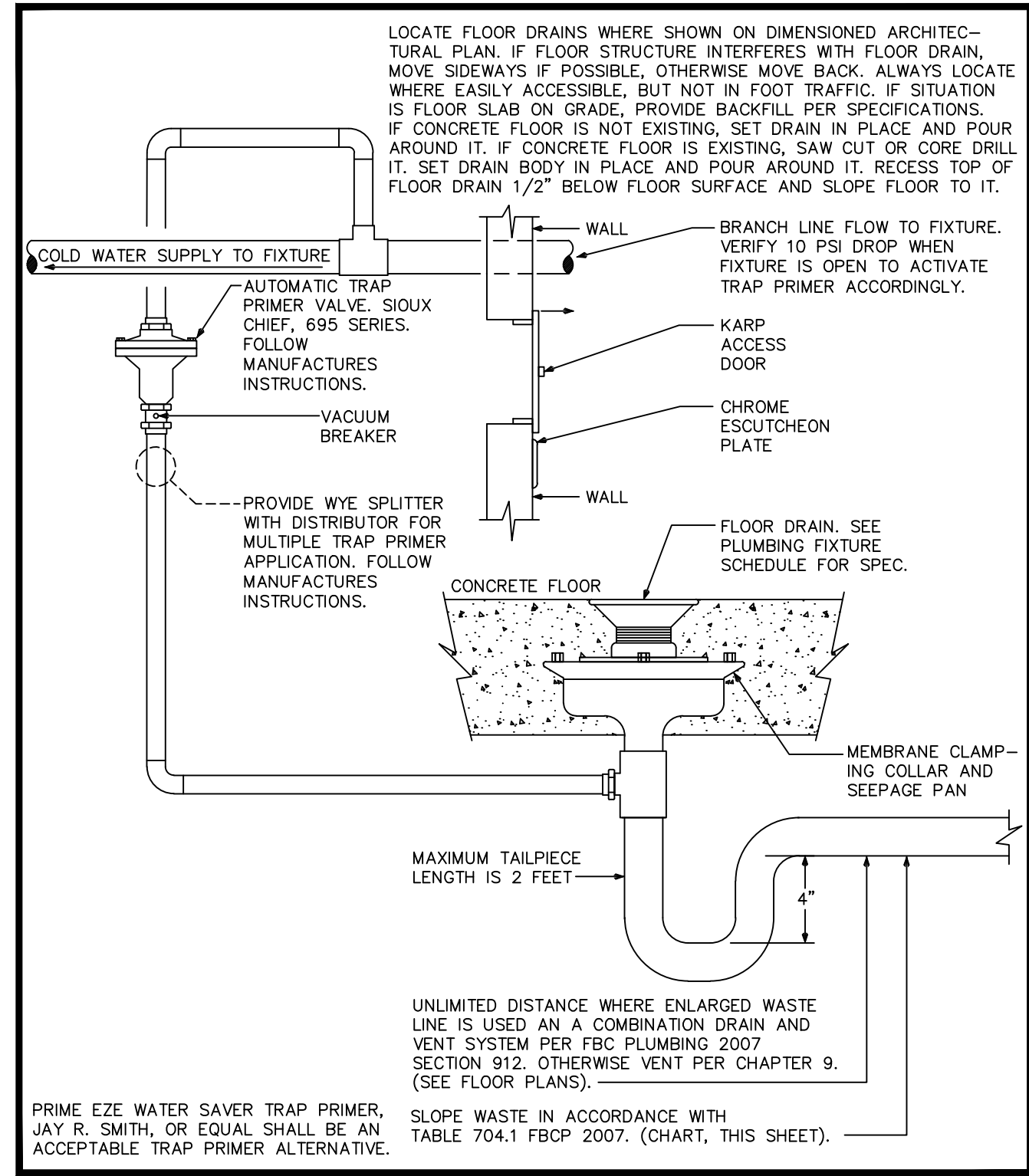
DRC

PZ25-12000048

05/30/2025

SCOPE OF WORK

1. ALL NEW WATER SUPPLY AND SANITARY DESIGN FOR 3 NEW WAREHOUSE BAYS



### 8 FLOOR DRAIN AND TRAP PRIMER DETAIL

SCALE: NTS

P.D.I. DESIGNATION	MANUF. & MODEL	FIXTURE UNITS	CONNECTION
A	SIOUX CHIEF 652-A	1-11	1/2"
B	SIOUX CHIEF 653-B	12-32	3/4"
C	SIOUX CHIEF 654-C	33-60	1"

SIOUX CHIEF SHOCK ARRESTORS APPROVED FOR INSTALLATION WITH NO ACCESS DOOR REQUIRED. CONFORMS TO ANSI/ASSE 1010 STANDARDS.

SLOPE OF HORIZ. DRAINAGE PIPE	
SIZE (Inches)	MINIMUM SLOPE (inch per foot)
2-1/2 or less	1/4
3 to 6	1/8
8 or larger	1/16

TABLE 704.1 OF THE FLORIDA PLUMBING CODE 2007

TYPE	SOIL / WASTE	VENT	TRAP	CW	HW	REMARKS
2" HUB DRAIN	2"	2"	2"	-	-	PROVIDE 1/2" CW TRAP PRIMER CONNECTION.
3" HUB DRAIN	3"	2"	3"	-	-	PROVIDE 1/2" CW TRAP PRIMER CONNECTION.
COFFEE MAKER/WATER FILTER	-	-	-	1/2"	-	PROVIDE WITH VACUUM BREAKER.
DISHWASHER (RESIDENTIAL TYPE)	1"	-	-	-	1/2"	CONNECT WASTE TO KITCHEN SINK TAILPIECE. PROVIDE WITH VACUUM BREAKER.
ELECTRIC WATER COOLER	2"	2"	1 1/4"	1/2"	-	-
OUTLET BOX	-	-	-	1/2"	-	PROVIDE w/ INTEGRAL WATER HAMMER ARRESTOR.
WASHING MACHINE OUTLET BOX	3"	2"	2"	1/2"	1/2"	PROVIDE w/ INTEGRAL WATER HAMMER ARRESTORS.
SINK	2"	2"	1 1/2"	1/2"	1/2"	1.0 GPM AT 60 PSI MAXIMUM.
MOP SINK	3"	2"	3"	1/2"	1/2"	PROVIDE HOSE THREAD FAUCET WITH INTEGRAL VACUUM BREAKER.
LAVATORY (PUBLIC)	2"	2"	1 1/4"	1/2"	1/2"	0.5 GPM AT 60 PSI MAXIMUM. (0.25 GALLON METERING CYCLE)
REFRIGERATOR	-	-	-	1/2"	-	PROVIDE WITH VACUUM BREAKER.
WATER CLOSET (FLUSH VALVE)	3" OR 4"	2"	INTEGRAL	1"	-	1.28 GALLONS PER FLUSHING CYCLE MAXIMUM.
WATER CLOSET (FLUSH TANK)	3" OR 4"	2"	INTEGRAL	1/2"	-	1.28 GALLONS PER FLUSHING CYCLE MAXIMUM.
URINAL	2"	2"	INTEGRAL	3/4"	-	0.128 GALLONS PER FLUSHING CYCLE MAXIMUM.

NOTE: PLUMBING FIXTURE CONNECTION SCHEDULE IS SHOWN FOR CONVENIENCE ONLY. PLUMBING CONTRACTOR TO CONFIRM FINAL PLUMBING FIXTURE CONNECTION SIZES WITH PLUMBING FIXTURE MANUFACTURER'S REQUIREMENTS. ALL FIXTURES SHALL COMPLY WITH LOCAL WATER-USE EFFICIENCY REQUIREMENTS.

### 7 TYPICAL PLUMBING FIXTURE CONNECTION SCHEDULE

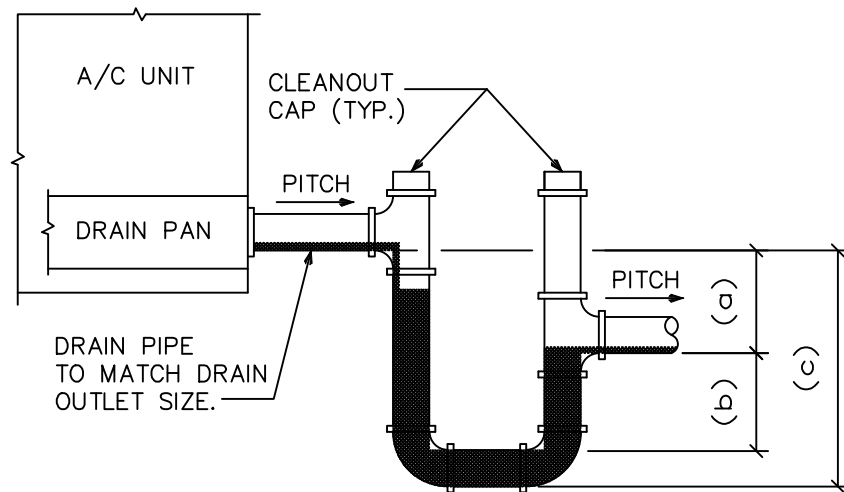
SCALE: NTS

CO	CLEAN OUT	— — — — —	SANITARY SEWER PIPING
S.O.V.	SHUT-OFF VALVE	— — — — —	VENT PIPING
COTC	CLEAN OUT TO GRADE	— — — — —	DOMESTIC COLD WATER PIPING
FD	FLOOR DRAIN	— — — — —	HOT WATER PIPING (110°)
CW	DOMESTIC COLD WATER	— — — — —	HOT WATER PIPING (140°)
HW	DOMESTIC HOT WATER	— — — — —	HOT WATER RECIRCULATING PIPING
HWR	DOMESTIC HOT WATER RECIRCULATING	— CD —	CONDENSATE PIPING
HB	HOSE BIBB	— CA —	COMPRESSED AIR PIPING
VTR	VENT THRU ROOF	— T&P —	TEMPERATURE AND PRESSURE RELIEF
	GATE VALVE	— SD —	STORM DRAIN PIPING
GV	GLOBE VALVE	— G —	GAS PIPING
CV	CHECK VALVE	— O —	PIPE RISE UP
SV	GAS SOLENOID VALVE	— D —	PIPE DOWN OR DROP
GC	GAS COCK	— E —	CAPPED END OF PIPE
WHA	WATER HAMMER ARRESTER (PDI No.)	— P —	POINT OF CONNECTION
FD	FLOOR DRAIN	— L —	P-TRAP

### 5 PLUMBING SYMBOLS

SCALE: NTS

- NOTES:
1. ALLOW SUFFICIENT SPACE BELOW DRAIN PAN FOR TRAP
  2. PITCH DRAIN FOR PROPER RUNOFF.
  3. MANUALLY PRIME FILL TRAP BEFORE START-UP TO FORM INITIAL DRAIN SEAL.
  4. SUPPORT LENGTHY DRAIN LINES TO PREVENT SAG AND CONDENSATE OVERFLOW.



THIS STANDARD DETAIL MUST BE REVIEWED AND SITE ADAPTED BY CONTRACTOR PRIOR TO USE FOR FINAL EQUIPMENT.

- (a) THIS DIMENSION IN INCHES MUST BE EQUAL TO THE MAXIMUM FAN SUCTION (NEGATIVE) STATIC PRESSURE IN INCHES WG (WITH DIRTY FILTERS, COILS, AND MAXIMUM AIR FLOW) + 1" W.G.
- (b) THIS DIMENSION IN INCHES MUST BE EQUAL TO MIN. 1/2 OF THE (a) ABOVE
- (c) EQUALS (a) + (b) + PIPE DIA. + INSULATION

### 6 CONDENSATE DRAIN DETAIL

SCALE: NTS

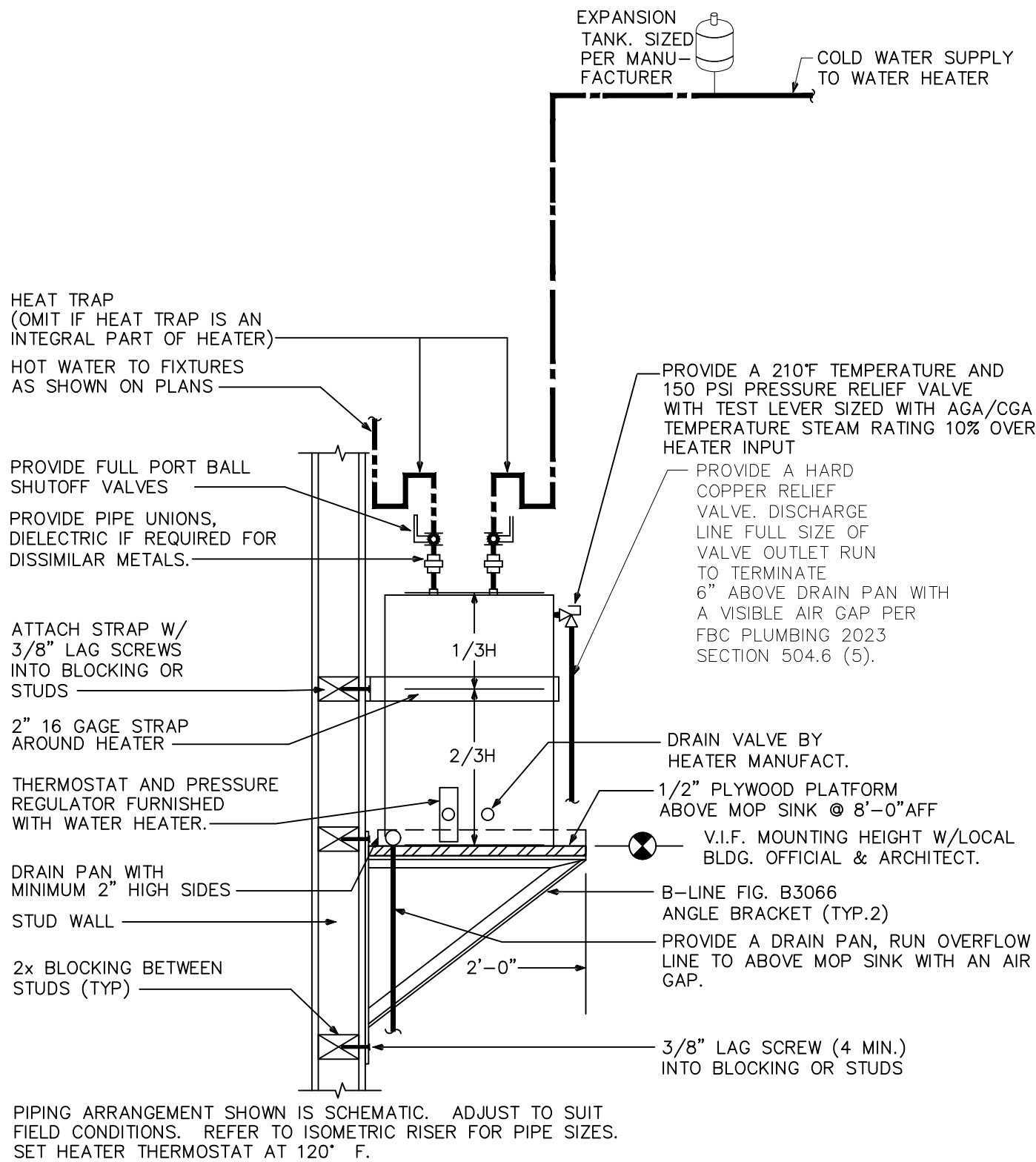
LAV	HANDICAP LAVATORY, AMERICAN STANDARD DECORUM MODEL #9024.001EC, WALL-MOUNT LAVATORY, WHITE, VITREOUS CHINA WITH SLOAN OPTIMA MODEL #ETF-610, 0.5 GPM HARDWIRED AG-POWERED SENSOR-ACTIVATED CENTERSET FAUCET. PROVIDE WITH MIFAB SERIES WC-41 CONCEALED-ARM CARRIER AND PLUMBEREX PRO EXTREME UNDER LAV SUPPLY & TRAP PROTECTORS.
WC	HANDICAP WATER CLOSET, AMERICAN STANDARD "CADET RIGHT HEIGHT" MODEL #2467.016, 1.28 GPF, TWO-PIECE, FLOOR MOUNTED, WHITE VITREOUS CHINA WITH ELONGATED BOWL. PROVIDE WITH TRIP LEVER TO WIDE SIDE OF ROOM AND AMERICAN STANDARD MODEL #5311.012 ELONGATED SEAT, OPEN FRONT LESS COVER.
MSK1	MOP SINK, MUSTEE MODEL #63M WITH PLAIN CURBS, TERRAZZO WITH RIM GUARDS & WALL GUARDS. MOP HANGER PROVIDE WITH CHICAGO FAUCET MODEL #897-CRCF, CHROME WITH CERAMIC-DISC CARTRIDGES & INTEGRAL LOOSE KEY STOPS.
EW1	ELECTRIC WATER HEATER, REHEM LOWBOY SERIES, 28 GAL. 208V/1PH/3.8kW. SET UNIT ON A STAND AND THERMAL EXPANSION TANK - AMTROL MODEL #ST-5.
WCO	WALL CLEANOUT, MIFAB C1430-RD WITH BRONZE PLUG, STAINLESS STEEL COVER, AND SCREW.
HDF/DF	HANDICAP DRINKING FOUNTAIN, HALSEY TAYLOR BI-LEVEL, WALL MOUNTED BARRIER FREE # HTV5-BL-WF-O. WADE 440 CARRIER AS REQUIRED. 115V, 4.0A, MUST MEET A.D.A. CODE.
FD	FLOOR DRAIN, SIOUX CHIEF 863 SERIES. PROVIDE TRAP PRIMER SIOUX CHIEF 695 SERIES.

GENERAL NOTES:

- (1) - FIXTURES SHALL BE AS SHOWN OR EQUAL.
- (2) - ALL FIXTURES SHALL COMPLY WITH TABLE 604.4 OF FBC 2023
- (3) - ALL FIXTURE TRIM PACKAGES INCLUDING BUT NOT LIMITED TO TRAP, ANGLE STOP, FLUSH VALVE, SUPPLY TUBES, AND CLEANOUT COVER PLATES SHALL BE OF THE SAME FINISH AS THE ABOVE
- (4) - ALL FIXTURES SHALL BE ROUGHED IN PER MANUFACTURER CUT SHEET TO MAINTAIN UNIFORMITY.

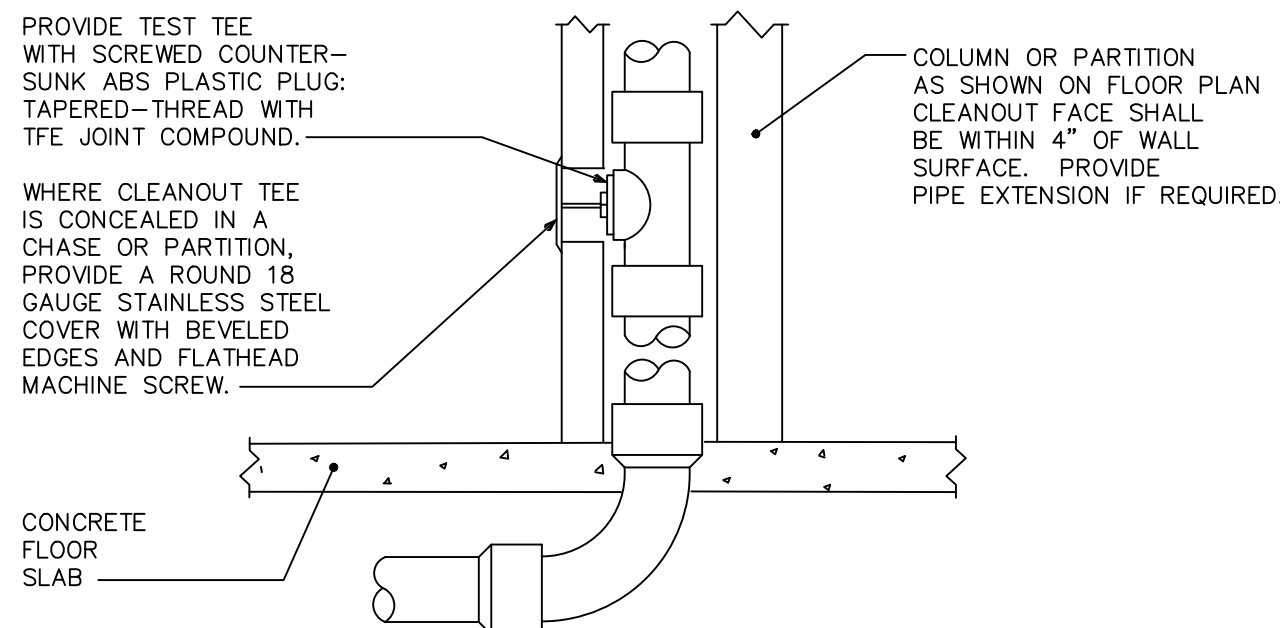
### 2 PLUMBING FIXTURE SCHEDULE

SCALE: NTS



### 3 WATER HEATER DETAIL

SCALE: NTS



NOTE: PROVIDE WCO WHERE SHOWN ON PLAN, AND ON SANITARY WASTE BRANCHES NOT SERVED WITH A FLOOR CLEANOUT. LOCATE ABOVE FIXTURE FLOOR RIM WITHIN 4" OF FLOOR. CONSULT LOCAL CODES FOR OTHER WCO REQUIREMENTS.

### 4 WALL CLEANOUT DETAIL

SCALE: NTS

SHEET#	DESCRIPTION
P1	PLUMBING NOTES, LEGEND & INDEX
P2	SANITARY PLAN
P3	WATER PLAN

### 1 PLUMBING SHEET INDEX

SCALE: NTS

THE CONTRACTOR SHALL FURNISH ALL LABOR, MATERIALS, AND EQUIPMENT NECESSARY FOR THE INSTALLATION OF A COMPLETE SYSTEM IN ACCORDANCE WITH THESE DRAWINGS, AND ALL OTHER APPLICABLE STATE, FLORIDA BUILDING CODE 2023-PLUMBING, THE COUNTY AND LOCAL ORDINANCES.

PLUMBING CONTRACTOR SHALL VISIT THE JOB SITE AND THOROUGHLY FAMILIARIZE HIMSELF WITH ALL EXISTING CONDITIONS.

ALL MATERIALS SHALL BE NEW, AND OF GOOD QUALITY.

ALL WORK SHALL BE PERFORMED BY A LICENSED PLUMBING CONTRACTOR IN A FIRST CLASS WORKMANLIKE MANNER. THE COMPLETED SYSTEM SHALL BE FULLY OPERATIONAL. ALL EXCAVATION AND BACKFILL AS REQUIRED FOR THIS PHASE OF CONSTRUCTION SHALL BE A PART OF THIS CONTRACT.

REQUIRED INSURANCE SHALL BE PROVIDED BY THE PLUMBING CONTRACTOR FOR PROTECTION AGAINST PUBLIC LIABILITY AND PROPERTY DAMAGE FOR THE DURATION OF THE WORK.

PLUMBING CONTRACTOR SHALL SECURE AND PAY FOR ALL PERMITS, FEES, INSPECTION AND TESTS, PLUMBING CONTRACTOR TO OBTAIN PERMIT AND APPROVED SUBMITTALS PRIOR TO BEGINNING WORK OR ORDERING EQUIPMENT. PLUMBING CONTRACTOR MUST BE PRESENT FOR ALL INSPECTIONS OF HIS WORK BY REGULATORY AUTHORITIES.

DRAWINGS ARE DIAGRAMMATIC. DO NOT SCALE FOR THE EXACT LOCATION OF FIXTURES, PIPING, EQUIPMENT, ETC.

ALL WORK SHALL BE COORDINATED WITH OTHER TRADES TO AVOID INTERFERENCE WITH THE PROGRESS OF CONSTRUCTION. REPORT ANY DISCREPANCY TO ENGINEER/ARCHITECT PRIOR TO BEGINNING CONSTRUCTION.

VERIFY LOCATION, SIZE, DIRECTION OF FLOW AND INVERTS OF ALL EXISTING UTILITIES PRIOR TO BEGINNING OF CONSTRUCTION. ADVISE ENGINEER OF ANY DISCREPANCIES.

WATER DISTRIBUTION PIPING ABOVE AND BELOW GROUND SHALL BE TYPE "L" COPPER. ALTERNATIVE MAY BE USED IN COMPLIANCE WITH FBC PLUMBING 2023 TABLES 605.3 AND 605.4 WHEN APPROVED BY LOCAL JURISDICTION AND ENGINEER ON RECORD. COORDINATE WITH LOCAL JURISDICTION FOR ADDITIONAL REQUIREMENTS.

SOIL, WASTE, VENT AND RAINWATER PIPING SHALL BE CAST IRON OR PVC, WHERE CODE ALLOWS. PVC MAY NOT BE USED THRU RATED ASSEMBLIES OR IN PLENUMS.

ALL FIXTURES MUST BE PROVIDED WITH READILY ACCESSIBLE STOPS AND APPROPRIATELY MARKED ACCESS PANELS. COORDINATE LOCATIONS WITH GENERAL CONTRACTOR PRIOR TO INSTALLATION.

FURNISH AND INSTALL APPROVED WATER HAMMER ARRESTORS FOR ALL (GROUP) PLUMBING FIXTURES, SIZED AND LOCATED PER MANUF.'S INSTALLATION INSTRUCTIONS AND WH-PDI 201.

DIELECTRIC COUPLINGS ARE REQUIRED BETWEEN ALL DISSIMILAR METAL IN PIPING AND EQUIPMENT CONNECTIONS.

ISOLATE COPPER PIPE FROM HANGER OR SUPPORTS WITH ISOLATOR PADS OR MATERIAL.

ALL FIRE RATED FLOOR AND WALL PENETRATIONS SHALL BE PROPERLY PROTECTED FROM FIRE, SMOKE AND WATER PENETRATION BY FILLING VOIDS BETWEEN PIPE AND WALL/FLOOR SLEEVES WITH FIRE RATED FOAM, TO ACHIEVE THE SAME RATING AS WALLS OR FLOORS AS PART OF THE PLUMBER'S WORK.

PLUMBING CONTRACTOR SHALL GUARANTEE ALL MATERIALS AND WORKMANSHIP FREE FROM DEFECTS FOR A PERIOD OF NOT LESS THAN ONE (1) YEAR FROM DATE OF ACCEPTANCE BY OWNER. CORRECTION OF ANY DEFECTS SHALL BE COMPLETED WITHOUT ADDITIONAL CHARGE AND SHALL INCLUDE REPLACEMENT OR REPAIR OF ANY OTHER PHASE OF THE INSTALLATION WHICH MAY HAVE BEEN DAMAGED.

PROVIDE ACCESS PANELS FOR ALL CONCEALED VALVES AND ALL WATER HAMMER ARRESTORS. ACCESS PANELS IN RATED WALLS MUST MAINTAIN THE SAME RATING AND MUST MATCH THE FINISH OF THE WALL IN WHICH IT IS INSTALLED.

ALL CONDENSATE DRAIN PIPING SHALL BE TYPE "L" COPPER WITH ARMAFLEX INSULATION PER TABLE 503.2.8 OF 2023 FBC ENERGY CONSERVATION. WHERE USED IN A RETURN AIR PLENUM PVC PIPING WITH ARMAFLEX INSULATION MAY BE USED IN LOCATIONS WHERE ALLOWED BY LOCAL CODES. SEE PLUMBING DRAWINGS FOR SIZE AND LOCATION OF PIPING.

NO WATER, SANITARY OR DRAINAGE PIPING PERMITTED IN ELECTRICAL OR ELEVATOR EQUIPMENT ROOMS.

ALL CONTROL VALVES SHALL BE TAGGED AND MARKED. A REPRODUCIBLE DIAGRAM LOCATING ALL VALVES SHALL BE PROVIDED FOR OWNER/OPERATOR.

PROVIDE ANGLE STOPS ON ALL WATER SERVICE LINES TO FIXTURES FOR INDIVIDUAL SHUT-OFF.

CONDENSATE LINES SHALL NOT DRAIN ON THE ROOFING SYSTEM OR ANY OF ITS COMPONENTS AND CONDENSATE LINES NEED NOT COMPLY WITH MIN. CLEARANCE REQUIREMENTS PER FBC 2023, PAR. 1522.3.5

STUDOR MINI/MAXI AIR ADMITTANCE VALVES MAY BE USED AS AN ALTERNATE TO VENT PIPING THRU ROOF WHERE ACCEPTABLE BY THE PLUMBING OFFICIAL AND LOCAL CODES. INSTALLATION SHALL BE AS PER MANUFACTURER'S RECOMMENDATIONS.

HOT WATER PIPING INSULATION SHALL BE INSTALLED IN ACCORDANCE WITH FLORIDA BUILDING CODE PLUMBING 2023 TABLE 607.2.1 CONTRACTOR SHALL USE ARMAFLEX OR EQUAL WHERE APPLICABLE. WHERE DOMESTIC WATER TEMPERATURES CAN CAUSE SWEATING ALL COLD WATER PIPING SHALL BE INSULATED WITH ARMAFLEX INSULATION, THICKNESS AS PER TABLE 503.2.8 OF 2010 FBC ENERGY CONSERVATION.

### 1 PLUMBING SPECIFICATIONS

SCALE: NTS

REVISIONS	BY

MIKAH J. ABBOTT  
STATE OF FLORIDA  
PE# 98054

1859 S. DIXIE HWY  
POMPANO BEACH, FL 33060  
(205) 300-3582

PLUMBING PLANS FOR:  
1150 SW 30TH AVE.  
POMPANO BEACH, FL 33069

EVERYTHING ENERGY INC.

1859 S. DIXIE HWY.

POMPANO BEACH, FLORIDA

EMAIL: autocad587@hotmail.com

energycalc@hotmail.com

PHONE: (561) 334-3170

(954) 776-2003



Drawn By: N.R.  
Checked By: M.J.A.

MIKAH ABBOTT

1859 S. DIXIE HWY

POMPANO BEACH FL

PHONE: 561-334-3170

EMAIL: autocad587@hotmail.com

DATE: 11-12-25

SCALE: 1/4"

PROJECT:

1150 SW 30TH AVE.

SHEET

P-1

10F3\_PAGES